

optimal  
nutritional care  
for all

## The vital necessity of optimal nutritional care

19 European countries joining in one striking campaign



# Joining forces and interests in the fight against malnutrition in Italy

ONCA Team Meeting

19 OTTOBRE 2023

## THE MALNUTRITION AWARENESS WEEKS 2023

optimal  
nutritional care  
for all



### Austria

Date to be announced

[View activities](#)



### Belgium

6 - 12 November 2023

[View activities](#)



### Italy

16 - 20 October 2023

[View activities](#)



### The Netherlands

6 - 10 November 2023

[View activities](#)



### Czech Republic

6 - 12 November 2023

[View activities](#)



### Denmark

30 October - 3 November 2023

[View activities](#)



### Portugal

6 - 12 November 2023

[View activities](#)



### Spain

27 November - 1 December 2023

[View activities](#)



### France

7 - 14 November 2023

[View activities](#)



### Germany

6 - 10 November 2023

[View activities](#)



### Sweden

16 - 20 October 2023

[View activities](#)



### Hungary

9 November 2023

[View activities](#)



### Greece

Date to be announced

[View activities](#)



### Israel

21 - 23 November 2023

[View activities](#)



### United Kingdom

Date to be announced

[View activities](#)

# Agenda



## **SINPE**

Stato dell'arte nella lotta alla malnutrizione  
Key performance indicators in nutrizione clinica



## **Conclusioni**

Bilancio, target futuri, obiettivi condivisi



## **Scientific societies**

Common efforts against malnutrition – activities and future targets



## **Patients' point of view**

Perceptions, challenges, and future targets for patient associations

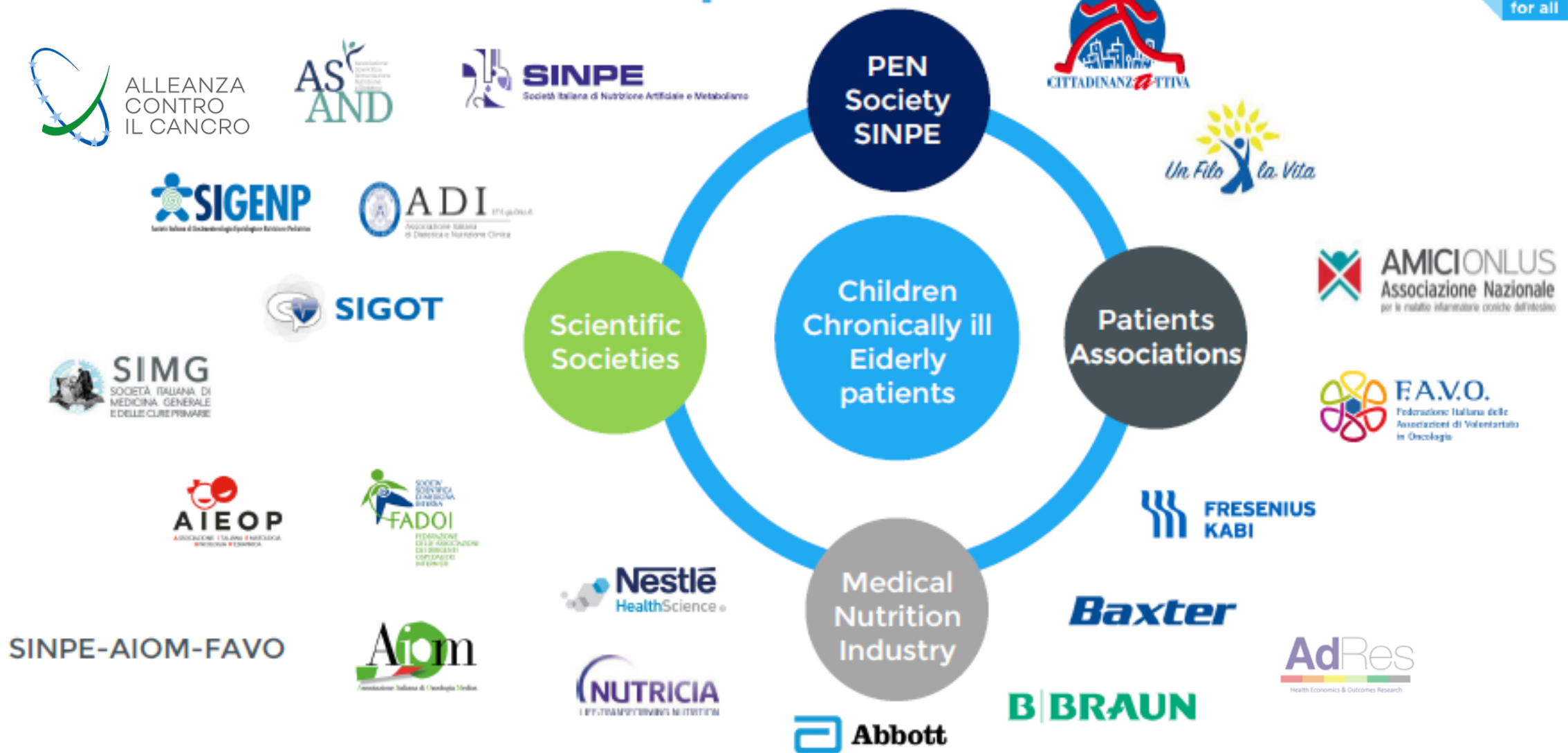


## **Medical Nutrition Industry**

Role and shared objectives in the fight against malnutrition

# Italian stakeholders map

optimal  
nutritional care  
for all





# Missione

- Diagnosi della malnutrizione e cura, proporzionale all'entità del problema, di tutti i pazienti che ne sono affetti
- Migliori outcome e qualità di vita
- Sistema sanitario sostenibile ed equo



# Relationship of nutritional status to length of stay, hospital costs, and discharge status of patients hospitalized in the medicine service

Comparison of length of stay (LOS), costs, and discharge status in patients at risk or not at risk for malnutrition in a tertiary-care medical center

**MIND THE GAP**

Discharged home/ self-care (%)	66	41	$P < .05$
-----------------------------------	----	----	-----------

JOURNAL OF THE AMERICAN DIETETIC ASSOCIATION  
' SEPTEMBER 1997 VOLUME 97 NUMBER 9



**Considerable increase of HAN  
(2005 → 2022)**  
**+ 45.8% in adults**  
**+ 763% in children**

**Substantial regional  
differences in prevalence and  
access to HAN**

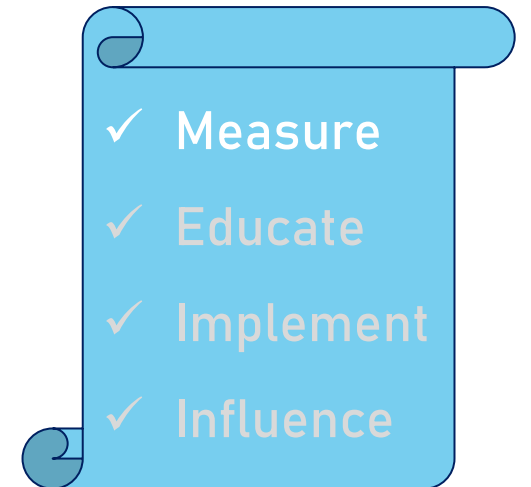
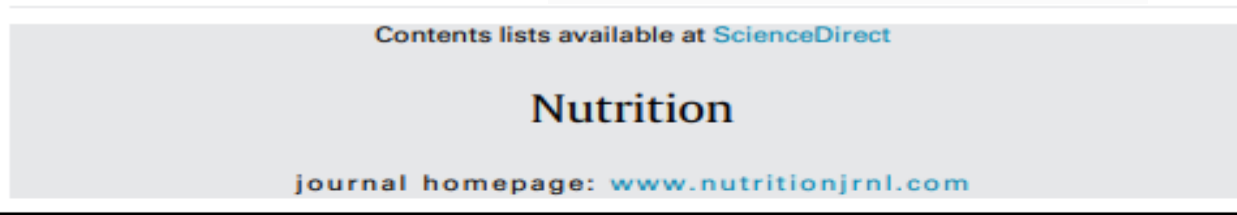
**Inequality in HAN prescription  
and use in various illnesses  
especially for ONS**

**Urgent need for a national  
HAN policy**

**HAN centers (geolocation and infos)**

## SINPE activities:

- ✓ **Measure** of malnutrition prevalence and economic burden:



Review article

**Prevalence and economic cost of malnutrition in Italy: A systematic review and metanalysis from the Italian Society of Artificial Nutrition and Metabolism (SINPE)**

Lorenzo Pradelli M.D. <sup>a,\*</sup>, Orietta Zaniolo Pharm.D. <sup>a</sup>,  
Sergio Riso M.D. <sup>c</sup>, Michela Zanetti M.D., Ph.D. <sup>d</sup>

Prevalence (median): **50%** of hospitalized adults, **25%** children and up to **70 %** of elderly in nursing homes.  
Additional cost (balanced model): **12 billion euros.**

[doi.org/10.1016/j.nut.2022.111943](https://doi.org/10.1016/j.nut.2022.111943)



**Obiettivo:** confronto tra gli esiti clinici ed economici nei pazienti oncologici dal 2015 al 2018, nella regione Piemonte, caratterizzato dalla presenza di una rete consolidata di supporto nutrizionale, e altre 2 regioni desiderose di costruire un sistema simile.

**Endpoint primari:** giorni di degenza ospedaliera, visite al pronto soccorso, ricoveri in degenza ordinaria o in regime di day hospital e il costo complessivo sostenuto dalle rispettive Regioni. Inoltre, come endpoint secondario, sarà analizzata la sopravvivenza complessiva dalla prima diagnosi.

L'analisi si basa sulle informazioni raccolte dai database sanitari (SDO) e i sistemi informatici sanitari con un progetto accurato.

**Studio sull'Utilizzo ed impatto della Nutrizione Enterale  
Domiciliare per os e per sonda nelle Patologie  
Oncologiche: effetto di un sistema integrato – studio di  
esiti e costi**

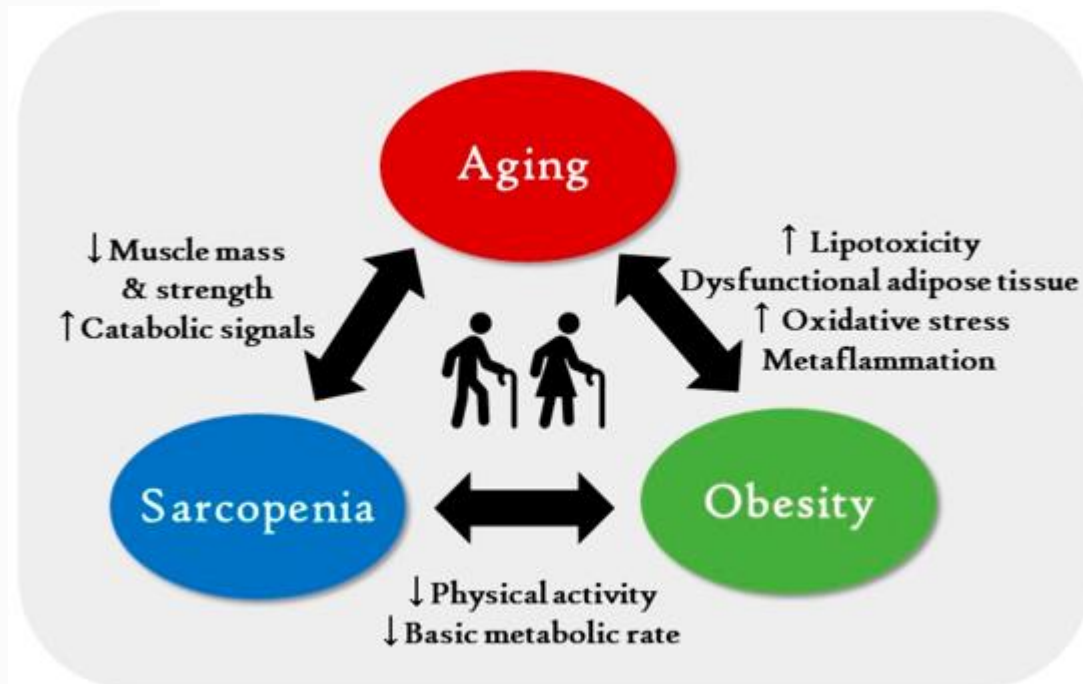
*Coming soon*

# Sarcopenic obesity

The awareness of sarcopenic obesity is **completely absent!**

Prevalence: **10-37%** among the over-60s have sarcopenia.

Estimated cost: **\$397 million** by 2028.



# Cosa manca?



CONSAPEVOLEZZA



**CONTROLLO**



EFFICACIA



# Il controllo ...

- The control of malnutrition must become as normal as hygiene rules in hospitals in the light of infection prevention
- Attualmente non sono identificabili dei responsabili dello stato nutrizionale dei pazienti, in tutti i contesti

## **ONCA:** Driving integrated nutritional care in EU programs

- Sharing good practices
- Collaboration between policymakers, patients, and healthcare providers is essential.
- A pan-European approach to translate Knowledge and Science into Policy

# Indicatori di performance in nutrizione clinica



- Prescrizione specialistica della terapia nutrizionale
- Dati tracciabili
- Monitoraggio degli esiti
- Aderenza all'evidenza scientifica
- Reporting/Auditing
- Valutazioni costo-efficacia
- Innovazione

# RINGRAZIAMENTI

optimal  
nutritional care  
for all



SINPE-AIOM-FAVO






# Onca Amsterdam Conference 2023



**ONCA Conference 2024**

**ITALY-Turin, 27-28th May**

An aerial night photograph of a city, likely London, showing the illuminated skyline and a prominent spire, possibly St. Paul's Cathedral, against a dark sky. The city lights are blurred, creating a bokeh effect.

## **Comprehensive malnutrition risk management policy – the next challenge for clinicians, policy makers and patients’ associations.**

**Backing the reinforcement of the risk management concept might hold the solution for overcoming the present inconsistency in tackling malnutrition across all contexts.**

It may be a further step of the continuous journey of ONCA teams to drive increased awareness, problem-solving and progresses in prevention, diagnosis and treatment of malnutrition in patients of all ages.

The task of developing and implementing effective policies is not straightforward. It requires the **cooperation and efforts of policy makers and health care providers, as well as input from patient associations to ensure that the policy is well-informed and responsive to the needs of those affected.**

Considering the dimensions of malnutrition and its overall burden, this is **the sole approach to promote careful management of the progressively increasing healthcare expenditure.**

# Agenda

A voi la parola



## **SINPE**

Key performance indicators: standards of care and adherence to evidence based nutritional recommendations



## **Scientific societies**

Common efforts against malnutrition – activities and future targets



## **Patients' point of view**

Perceptions, challenges, and future targets for patient associations



## **Medical Nutrition Industry**

Role and shared objectives in the fight against malnutrition



## **Conclusioni**

Bilancio, target futuri, obiettivi condivisi